

# Commercial Unit Coolers




- Optimised 3/8" Rifle Bore Tube Coils
- Light Weight Alu Case - 'Signal White' Powder Coat
- Factory Applied "Blue Coil Coat" Corrosion Protection
- High Airflow External Rotor Motors
- Turbo Heat Exchangers
- Reversible Drain Trays
- Low Temp Heater Safety Klixon


## P SERIES

2.2 21.5 kW

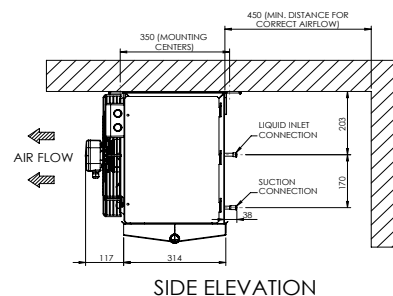
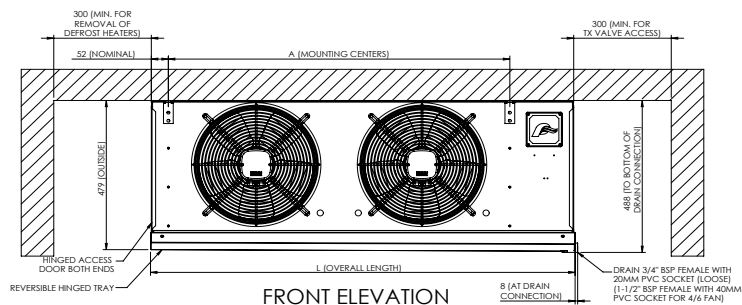
### MEDIUM TEMP

MODELS	PM	30	40	50	60	70	80	95	105	110	130	140	160	190	210
Capacity	R404A	3.03	4.17	5.04	6.09	7.17	8.28	9.72	10.65	11.28	13.29	14.34	16.38	19.41	21.48
kW @ 6 KTD -4°C SST	R407F	3.18	4.38	5.28	6.39	7.53	8.70	10.20	11.16	11.85	13.95	15.06	17.19	20.37	22.53
	R22	2.97	4.08	4.92	5.97	7.02	8.10	9.54	10.44	11.04	13.02	14.04	16.05	19.02	21.06
	R134a	2.76	3.78	4.59	5.55	6.54	7.53	8.85	9.69	10.26	12.09	13.05	14.91	17.67	19.53
T.X Valve	R404A	A-SW	A-SW	A-SW	B-SW	B-SW	B-SW	C-SW	C-SW	C-SW	C-SW	C-SW	D-SW	D-SW	D-SW
SCE / ECE	R407F	AA-VW	A-VW	A-VW	A-VW	A-VW	A-VW	B-SW	B-SW	B-SW	B-SW	B-SW	C-SW	C-SW	C-SW
	R22	AA-VW	A-VW	A-VW	A-VW	A-VW	A-VW	B-SW	B-SW	B-SW	B-SW	B-SW	C-SW	C-SW	C-SW
	R134a	AA-JW	AA-JW	A-JW	A-JW	A-JW	A-JW	B-JW	B-JW	B-JW	C-JW	C-JW	C-JW	C-JW	D-JW

### LOW TEMP

MODELS	PL	22	30	45	60	70	80	95	120	130
Capacity	R404A	2.25	3.12	4.56	6.21	7.11	8.25	9.63	12.30	13.29
kW @ 6 KTD -24°C SST	R407F	2.22	3.09	4.50	6.15	7.05	8.16	9.54	12.18	13.14
	R22	2.19	3.03	4.41	6.00	6.90	8.01	9.33	11.94	12.90
	R134a	1.92	2.64	3.87	5.28	6.03	7.02	8.19	10.44	11.31
T.X Valve	R404A	A-SW	A-SW	B-SW	B-SW	C-SW	C-SW	D-SW	6-SW	6-SW
SCE / ECE & EBE	R407F	AA-VW	AA-VW	A-VW	A-VW	A-VW	B-VW	B-VW	C-VW	C-VW
	R22	AA-VW	AA-VW	A-VW	A-VW	A-VW	B-VW	B-VW	C-VW	C-VW
	R134a	AA-JW	A-JW	A-JW	B-JW	C-JW	C-JW	C-JW	C-JW	C-JW

## DIMENSIONS



NTS (mm)

## MEDIUM TEMP

MODELS	PM	30	40	50	60	70	80	95	105	110	130	140	160	190	210
Air Throw	m	8.0	8.5	8.0	11.5	11.0	14.5	13.0	15.0	15.5	15.0	16.0	18.0	17.5	18.5
Air Volume	l/sec	860	875	790	1720	1550	1750	1580	2320	2460	2220	3100	3520	3180	4650
Fan Motors Ø 350mm	Num.	1	1	1	2	2	2	2	3	3	3	4	4	4	6
	Watts	175	175	175	350	350	350	350	525	525	525	700	700	700	700
	Amps	0.75	0.75	0.75	1.5	1.5	1.5	1.5	2.25	2.25	2.25	3.0	3.0	3.0	3.0
Coil	Circuit Vol.	dm <sup>3</sup>	2.20	3.30	3.30	4.41	4.41	6.60	6.60	6.60	8.82	8.82	8.82	13.36	13.36
	Connection Dist Inlet		1/2"	1/2"	1/2"	1/2"	1/2"	5/8"	5/8"	5/8"	7/8"	7/8"	7/8"	7/8"	7/8"
	F.Sw Suct Outlet		3/4"	3/4"	3/4"	7/8"	7/8"	7/8"	7/8"	7/8"	1-1/8"	1-1/8"	1-1/8"	1-3/8"	1-3/8"
	fpi		6	6	8	6	8	6	8	8	6	8	8	6	8
	Defrost Watts		1500	2090	2090	2590	2590	3620	3620	3620	3650	3650	3650	5410	5410
Dimensions	L		799	1051	1051	1309	1309	1813	1813	1813	2329	2329	2329	3349	3349
	A		540	792	792	1050	1050	1554	1554	1554	2070	2070	2070	3090	3090
Net Weight	kg		19	22	23	29	30	44	45	50	61	62	66	72	82

## LOW TEMP

MODELS	PL	22	30	45	60	70	80	95	120	130
Air Throw	m	8.0	8.5	11.5	12.5	14.0	15.0	16.0	17.0	18.0
Air Volume	l/sec	775	790	1550	1580	2095	2220	2800	3180	4200
Fan Motors Ø 350mm	Num.	1	1	2	2	3	3	4	4	6
	Watts	175	175	350	350	525	525	700	700	1050
	Amps	0.75	0.75	1.5	1.5	2.25	2.25	3.0	3.0	4.5
Coil	Circuit Vol.	dm <sup>3</sup>	2.20	3.30	4.41	6.60	6.60	8.82	8.82	13.36
	Connection Dist Inlet		1/2"	1/2"	1/2"	5/8"	5/8"	7/8"	7/8"	7/8"
	F.Sw Suct Outlet		3/4"	3/4"	7/8"	7/8"	7/8"	1-1/8"	1-1/8"	1-3/8"
	fpi		6	6	6	6	6	6	6	6
	Defrost Watts		2400	3200	4120	5780	5780	7300	7300	10820
Dimensions	L		799	1051	1309	1813	1813	2329	2329	3349
	A		540	792	1050	1554	1554	2070	2070	3090
Net Weight	kg		20	23	29	45	50	60	65	83

### CAPACITY CORRECTION

PMN @ °C SST	PLN @ °C SST
5°	1.17
0°	1.07
-5°	0.99
-10°	0.93

### RELATIVE HUMIDITY GUIDE

Temp Diff	R.H %	Temp Diff	R.H %
2K	94	10K	77
4K	89	12K	73
6K	84	14K	70
8K	81	16K	66

### NOTES:

- Air throw based on CRMA standard@ 20°C  
Multiply figures by 0.94 for 2°C and 0.87 for -18°C
- Fan motors 220-240V/1/50Hz
- Defrost heaters 220-240V/1/50Hz  
Connect in Y for 380-420V/3/50Hz supply

Specifications subject to change without notice